



UnitedNetworks

A division of Vector Limited

Gas Network pricing schedule

Module 15: Gas
Version: 2009.2
Effective: 1 October 2009

Contents

Section 1: Gas pricing	3
1.1 General terms	3
1.1.1 Extent of charges	3
1.1.2 Specifying the Regional Gas Networks	3
1.1.3 Selection of Load Group	4
1.1.4 Changes to the End-Consumer's Point of Connection	4
1.1.5 Provision of consumption information	4
1.1.6 Calculation of scaled and variable charges	4
1.2 Residential Gas pricing	5
1.2.1 Residential Load Group option.....	5
1.2.2 Load Group GA0R.....	5
1.3 Business Gas pricing.....	6
1.3.1 Business Load Group option.....	6
1.3.2 Load Group GA01	6
1.4 Commercial Gas pricing	7
1.4.1 Peak Network usage	7
1.4.2 Pricing zones	7
1.4.3 Commercial Load Group options.....	8
1.4.4 Load Group GA22	8
1.4.5 Load Group GA12	8
1.4.6 Load Group GA02.....	9
1.4.7 Load Group GA23	9
1.4.8 Load Group GA13	9
1.4.9 Load Group GA03	10
1.4.10 Load Group GA24	10
1.4.11 Load Group GA14	10
1.4.12 Load Group GA04	11
1.5 Gas Network Loss Factors	11
1.5.1 Loss factors	11
Section 2: Pricing Schedule	12
2.1 Northern Regional Gas Network line charges	12
2.2 Northern Regional Gas Network Pricing Zones	13
2.3 Other Charges	14

Section 1: GAS PRICING

The Distributor's Northern Regional Gas Network line charges are designed to cover the cost of transporting Gas over the Gas Network to End-Consumer's homes and businesses.

1.1 GENERAL TERMS

- (a) For full details of the conditions of connection to and conveyance across the Distributor's Gas Network(s), please refer to the "Use of Network Agreement".
- (b) All defined terms in this module have the same meanings as those terms in the Use of Network Agreement. Load Group and End-Consumer Load Group have the same meaning.
- (c) Times stated in this module are New Zealand Daylight Time unless otherwise specified.

1.1.1 Extent of charges

For the avoidance of doubt, the line charges published in this pricing module relate to the cost of owning, operating and maintaining the Network as it currently exists and do not include or are exclusive of:

- (a) Goods and Services Tax (GST);
- (b) The cost of the Gas itself;
- (c) The cost of the End-Consumer Fittings;
- (d) The provision of Metering Equipment which is located at the Point of Connection to the Gas Network
- (e) Gas Transmission Costs (charged separately by Vector Gas Limited);
- (f) Gas measurement systems (GMSs);
- (g) Reading of meters and/or TOU (time of use) devices;
- (h) Reconciliation/allocation services;
- (i) Connection to the Network of additional End-Consumers;
- (j) The modification, relocation or removal of current End-Consumer Points of Connection;
- (k) Disconnection and reconnection of Points of Connection;
- (l) Additions to existing Points of Connection required for TOU metering;
and
- (m) The Distributor's telemetry system (Telenet).

1.1.2 Specifying the Regional Gas Networks

The Regional Gas Network that End-Consumers are supplied from is determined by the relevant Injection Point. The Injection Points for the Northern Regional Gas Network are Alfriston, Bruce McLaren, Drury, Henderson, Hunua Rd, Kingseat, Papakura, Pukekohe, Ramarama, Tuakau, Waitoki B, Waiuku and Westfield.

1.1.3 Selection of Load Group

- (a) The Load Group for Residential End-Consumers may be nominated by the Retailer in accordance with the requirements of this pricing module for the various consumption options.
- (b) The Load Group for all other Points of Connection will be set by the Distributor based on the criteria set out in this pricing module.

1.1.4 Changes to the End-Consumer's Point of Connection

The Retailer may request a change to an End-Consumer's Point of Connection supplied by the Distributor (including but not limited to the capacity, security, service levels etc). In order to supply the new or changed service, the Distributor may apply non-standard charges other than those contained in this schedule.

1.1.5 Provision of consumption information

- (a) The Retailer will provide the Distributor with consumption data for each ICP and for each code as prescribed in this price module.
- (b) Where more than one meter at an ICP is in use, but a single variable line charge applies, the consumption data will need to be aggregated before forwarding to the Distributor.
- (c) Where a half hourly meter is fitted and the End-Consumer's Load Group requires half hourly data, the Retailer must submit half hourly consumption information. The Retailer may use the code as prescribed in this price module or may use the consumption code TAIC. The Distributor will then determine the appropriate charges from the half hourly data file.

1.1.6 Calculation of scaled and variable charges

- (a) Where the sum of the volume for all End-Consumers in a Regional Network (after adjustments for estimated volumes and losses) does not reconcile with the total Energy injected into the Network each month, the Distributor may factor up or down the loss adjusted volume for End-Consumers identified by the Distributor so that the total volume of all End-Consumers reconciles with the total Energy injected into the Network.
- (b) The volume for each End-Consumer derived from this calculation will be the basis for calculating variable charges.

1.2 RESIDENTIAL GAS PRICING

This section applies to all Residential End-Consumers. A Residential End-Consumer is where the End-Consumer's Point of Connection is for a private dwelling (intended for occupation mainly as a place of residence) not normally used for any business activity but does not include premises referred to in paragraphs (a) to (i) of Section 90 of the Electricity Industry Reform Act 1998.

Residential End-Consumers typically have a load size (installed equipment or meter capacity) of less than or equal to 10 standard cubic metres per hour (scm/h).

1.2.1 Residential Load Group option

The Load Groups available to Residential End-Consumers are shown below:

Description	Load Group
Residential End-Consumers with a load size \leq 10 scm/h.	GA0R

1.2.2 Load Group GA0R

The GA0R Load Group applies to Residential End-Consumers with a load size less than or equal to 10scm/h.

Load Group	Consumption code	Code	Description	Units	Charge
GA0R	FIXD	GA0R-FIXD	Fixed	\$/day	0.2400
GA0R	24UC	GA0R-24UC	Variable	\$/kWh	0.0256

- (a) The fixed charge is a daily charge applied to the number of days each Point of Connection is connected to the Distributor's Network (code GA0R-FIXD).
- (b) The uncontrolled charge applies to all gas distributed to each End-Consumer (code GA0R-24UC).

1.3 BUSINESS GAS PRICING

This section applies to all Business End-Consumers. A Business End-Consumer is where the End-Consumer is not a Residential End-Consumer, and has a load size (installed equipment or meter capacity) of less than or equal to 10 standard cubic metres per hour (scm/h).

1.3.1 Business Load Group option

The Load Groups available to Business End-Consumers are shown below:

Description	Load Group
Business End-Consumers with a load size \leq 10 scm/h.	GA01

1.3.2 Load Group GA01

The GA01 Load Group applies to Business End-Consumers with a load size less than or equal to 10scm/h.

Load Group	Consumption code	Code	Description	Units	Charge
GA01	FIXD	GA01-FIXD	Fixed	\$/day	0.2900
GA01	24UC	GA01-24UC	Variable	\$/kWh	0.0263

- (a) The fixed charge is a daily charge applied to the number of days each Point of Connection is connected to the Distributor's Network (code GA01-FIXD).
- (b) The uncontrolled charge applies to all gas distributed to each End-Consumer (code GA01-24UC).

1.4 COMMERCIAL GAS PRICING

This section applies to all Commercial End-Consumers. A Commercial End-Consumer is where the End-Consumer is not a Residential End-Consumer and has a load size (installed equipment or meter capacity) of greater than 10 standard cubic metres per hour (scm/h).

Commercial End-Consumers are placed into Load Groups based on the End-Consumer's peak Network usage and the appropriate zone. Subject to clause 1.1.4 or by agreement with the End-Consumer, the Distributor may place the End-Consumer into non-standard Load Groups irrespective of the End-Consumer's peak Network usage and zone.

1.4.1 Peak Network usage

The peak Network usage will be equivalent to either:

- (a) the meter set capacity; or
- (b) the rating of a load limiting device where a device is fitted; or
- (c) a lesser quantity than the meter set capacity where it can be demonstrated to the Distributor's satisfaction that such a lesser quantity is appropriate based on the load characteristics and capacity requirement.

1.4.2 Pricing zones

There are three pricing zones on the Gas Network;

- (a) Zone 2: End-Consumers located within 1 km of a designated gas network;
- (b) Zone 1: End-Consumers located more than 1 km away and within 2 km of a designated gas network; and
- (c) Zone 0: End-Consumers not located in zone 1, or 2.

Designated gas networks are specified by the Distributor from time to time, and are illustrated in Section 2.2

1.4.3 Commercial Load Group options

The structure of the Load Groups available to Commercial Gas End-Consumers is shown below:

Description	Load Group
Zone 2, > 10 scm/h and ≤ to 40 scm/h.	GA22
Zone 1, > 10 scm/h and ≤ to 40 scm/h.	GA12
Zone 0, > 10 scm/h and ≤ to 40 scm/h.	GA02
Zone 2, > 40 scm/h and ≤ to 200 scm/h.	GA23
Zone 1, > 40 scm/h and ≤ to 200 scm/h.	GA13
Zone 0, > 40 scm/h and ≤ to 200 scm/h.	GA03
Zone 2, > 200 scm/h.	GA24
Zone 1, > 200 scm/h.	GA14
Zone 0, > 200 scm/h.	GA04

1.4.4 Load Group GA22

The GA22 Load Group applies to Commercial End-Consumers with a load size greater than 10 scm/h and less than or equal to 40scm/h in zone 2.

Load Group	Consumption code	Code	Description	Units	Charge
GA22	FIXD	GA22-FIXD	Fixed	\$/day	0.8900
GA22	24UC	GA22-24UC	Variable	\$/kWh	0.0118

- (a) The fixed charge is a daily charge applied to the number of days each Point of Connection is connected to the Distributor's Network (code GA22-FIXD).
- (b) The uncontrolled charge applies to all gas distributed to each End-Consumer (code GA22-24UC).

1.4.5 Load Group GA12

The GA12 Load Group applies to Commercial End-Consumers with a load size greater than 10 scm/h and less than or equal to 40scm/h in zone 1.

Load Group	Consumption code	Code	Description	Units	Charge
GA12	FIXD	GA12-FIXD	Fixed	\$/day	1.0400
GA12	24UC	GA12-24UC	Variable	\$/kWh	0.0132

- (a) The fixed charge is a daily charge applied to the number of days each Point of Connection is connected to the Distributor's Network (code GA12-FIXD).
- (b) The uncontrolled charge applies to all gas distributed to each End-Consumer (code GA12-24UC).

1.4.6 Load Group GA02

The GA02 Load Group applies to Commercial End-Consumers with a load size greater than 10 scm/h and less than or equal to 40scm/h in zone 0.

Load Group	Consumption code	Code	Description	Units	Charge
GA02	FIXD	GA02-FIXD	Fixed	\$/day	1.1200
GA02	24UC	GA02-24UC	Variable	\$/kWh	0.0228

- (a) The fixed charge is a daily charge applied to the number of days each Point of Connection is connected to the Distributor's Network (code GA02-FIXD).
- (b) The uncontrolled charge applies to all gas distributed to each End-Consumer (code GA02-24UC).

1.4.7 Load Group GA23

The GA23 Load Group applies to Commercial End-Consumers with a load size greater than 40 scm/h and less than or equal to 200scm/h in zone 2.

Load Group	Consumption code	Code	Description	Units	Charge
GA23	FIXD	GA23-FIXD	Fixed	\$/day	2.9600
GA23	24UC	GA23-24UC	Variable	\$/kWh	0.0099

- (a) The fixed charge is a daily charge applied to the number of days each Point of Connection is connected to the Distributor's Network (code GA23-FIXD).
- (b) The uncontrolled charge applies to all gas distributed to each End-Consumer (code GA23-24UC).

1.4.8 Load Group GA13

The GA13 Load Group applies to Commercial End-Consumers with a load size greater than 40 scm/h and less than or equal to 200scm/h in zone 1.

Load Group	Consumption code	Code	Description	Units	Charge
GA13	FIXD	GA13-FIXD	Fixed	\$/day	3.7700
GA13	24UC	GA13-24UC	Variable	\$/kWh	0.0113

- (a) The fixed charge is a daily charge applied to the number of days each Point of Connection is connected to the Distributor's Network (code GA13-FIXD).
- (b) The uncontrolled charge applies to all gas distributed to each End-Consumer (code GA13-24UC).

1.4.9 Load Group GA03

The GA03 Load Group applies to Commercial End-Consumers with a load size greater than 40 scm/h and less than or equal to 200scm/h in zone 0.

Load Group	Consumption code	Code	Description	Units	Charge
GA03	FIXD	GA03-FIXD	Fixed	\$/day	4.8900
GA03	24UC	GA03-24UC	Variable	\$/kWh	0.0129

- (a) The fixed charge is a daily charge applied to the number of days each Point of Connection is connected to the Distributor's Network (code GA03-FIXD).
- (b) The uncontrolled charge applies to all gas distributed to each End-Consumer (code GA03-24UC).

1.4.10 Load Group GA24

The GA24 Load Group applies to Commercial End-Consumers with a load size greater than 200scm/h in zone 2.

Load Group	Consumption code	Code	Description	Units	Charge
GA24	FIXD	GA24-FIXD	Fixed	\$/day	8.8800
GA24	24UC	GA24-24UC	Variable	\$/kWh	0.0079

- (a) The fixed charge is a daily charge applied to the number of days each Point of Connection is connected to the Distributor's Network (code GA24-FIXD).
- (b) The uncontrolled charge applies to all gas distributed to each End-Consumer (code GA24-24UC).

1.4.11 Load Group GA14

The GA14 Load Group applies to Commercial End-Consumers with a load size greater than 200scm/h in zone 1.

Load Group	Consumption code	Code	Description	Units	Charge
GA14	FIXD	GA14-FIXD	Fixed	\$/day	11.300
GA14	24UC	GA14-24UC	Variable	\$/kWh	0.0094

- (a) The fixed charge is a daily charge applied to the number of days each Point of Connection is connected to the Distributor's Network (code GA14-FIXD).
- (b) The uncontrolled charge applies to all gas distributed to each End-Consumer (code GA14-24UC).

1.4.12 Load Group GA04

The GA04 Load Group applies to Commercial End-Consumers with a load size greater than 200scm/h in zone 0.

Load Group	Consumption code	Code	Description	Units	Charge
GA04	FIXD	GA04-FIXD	Fixed	\$/day	14.790
GA04	24UC	GA04-24UC	Variable	\$/kWh	0.0108

- (a) The fixed charge is a daily charge applied to the number of days each Point of Connection is connected to the Distributor's Network (code GA04-FIXD).
- (b) The uncontrolled charge applies to all gas distributed to each End-Consumer (code GA04-24UC).

1.5 GAS NETWORK LOSS FACTORS

Losses and Loss Factors may be reviewed and may be amended by the Distributor from time to time, on reasonable notice to the Retailer, to ensure that they reflect UFG on the Network as accurately as possible.

1.5.1 Loss factors

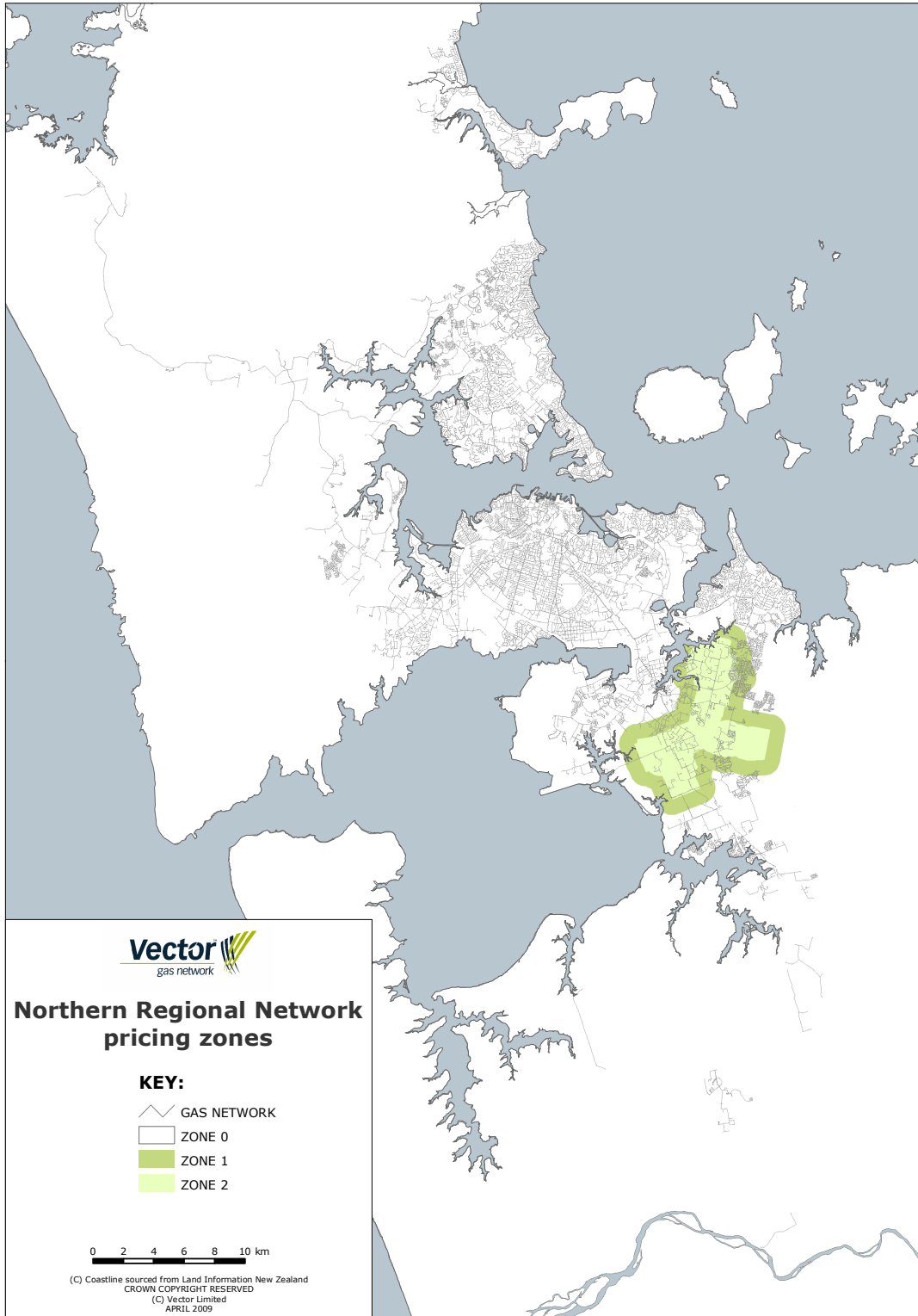
For the purpose of calculating Network line charges, unless otherwise specified, Loss Factors do not need to be applied to the measured or calculated Energy conveyed to Points of Connection.

Section 2: PRICING SCHEDULE

2.1 NORTHERN REGIONAL GAS NETWORK LINE CHARGES

Load Group	Consumption code	Code	Description	Units	Charge
GA0R	FIXD	GA0R-FIXD	Fixed	\$/day	0.2400
GA0R	24UC	GA0R-24UC	Variable	\$/kWh	0.0256
GA01	FIXD	GA01-FIXD	Fixed	\$/day	0.2900
GA01	24UC	GA01-24UC	Variable	\$/kWh	0.0263
GA22	FIXD	GA22-FIXD	Fixed	\$/day	0.8900
GA22	24UC	GA22-24UC	Variable	\$/kWh	0.0118
GA12	FIXD	GA12-FIXD	Fixed	\$/day	1.0400
GA12	24UC	GA12-24UC	Variable	\$/kWh	0.0132
GA02	FIXD	GA02-FIXD	Fixed	\$/day	1.1200
GA02	24UC	GA02-24UC	Variable	\$/kWh	0.0228
GA23	FIXD	GA23-FIXD	Fixed	\$/day	2.9600
GA23	24UC	GA23-24UC	Variable	\$/kWh	0.0099
GA13	FIXD	GA13-FIXD	Fixed	\$/day	3.7700
GA13	24UC	GA13-24UC	Variable	\$/kWh	0.0113
GA03	FIXD	GA03-FIXD	Fixed	\$/day	4.8900
GA03	24UC	GA03-24UC	Variable	\$/kWh	0.0129
GA24	FIXD	GA24-FIXD	Fixed	\$/day	8.8800
GA24	24UC	GA24-24UC	Variable	\$/kWh	0.0079
GA14	FIXD	GA14-FIXD	Fixed	\$/day	11.300
GA14	24UC	GA14-24UC	Variable	\$/kWh	0.0094
GA04	FIXD	GA04-FIXD	Fixed	\$/day	14.790
GA04	24UC	GA04-24UC	Variable	\$/kWh	0.0108

2.2 NORTHERN REGIONAL GAS NETWORK PRICING ZONES



2.3 OTHER CHARGES

Unless stated otherwise below, all charges will be invoiced directly to the Retailer by the Distributor and not to the End-Consumer.

All Non-Network Fault work, Retailer or End-Consumer services not listed below will be charged to the Retailer on a time and materials basis at market rates.

#	Fee	Charge
1	New connection fee A fee may be charged at market rates for time and materials where the Distributor is required to connect the service main to the meter to complete the new connection	Price on Application
2	Site visit fee Payable for any site visit by the Distributor, including Non-Network call out, temporary disconnection, urgent after hours disconnection, vacant site disconnection and reconnection, permanent disconnection and change of capacity (where the capacity change can be completed by changing fuse size within the existing fuse holder. Work in excess of this will be charged directly to the End-Consumer on a time and materials basis at market rates).	\$100 per site visit
3	Late, incorrect or incomplete consumption data fee This fee is payable where consumption data does not comply with the requirements of the Use of Networks Agreement. It will be charged on the basis of the actual time spent by a billing analyst to review, correct, validate and reconcile the information.	\$90 per hour